

# APPARTAMENTO n° 3 p.ed. 153 RAGOLI II PARTE

PIANO TERRA

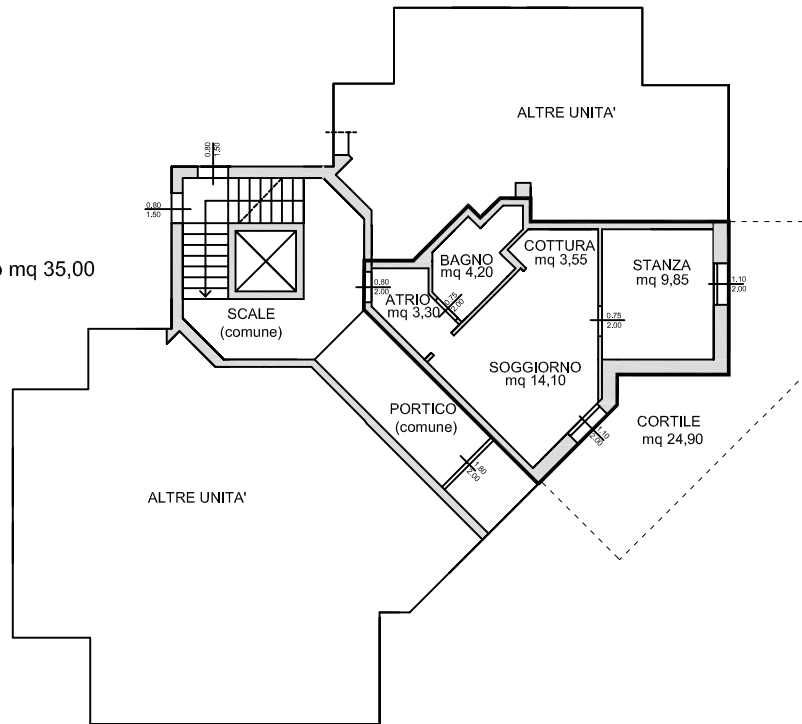
h = 2,40 m

SUB 3

P.T. Sup. netta appartamento mq 35,00

P.T. Sup. cortile mq 24,90

P.S. Sup. cantina mq 3,10



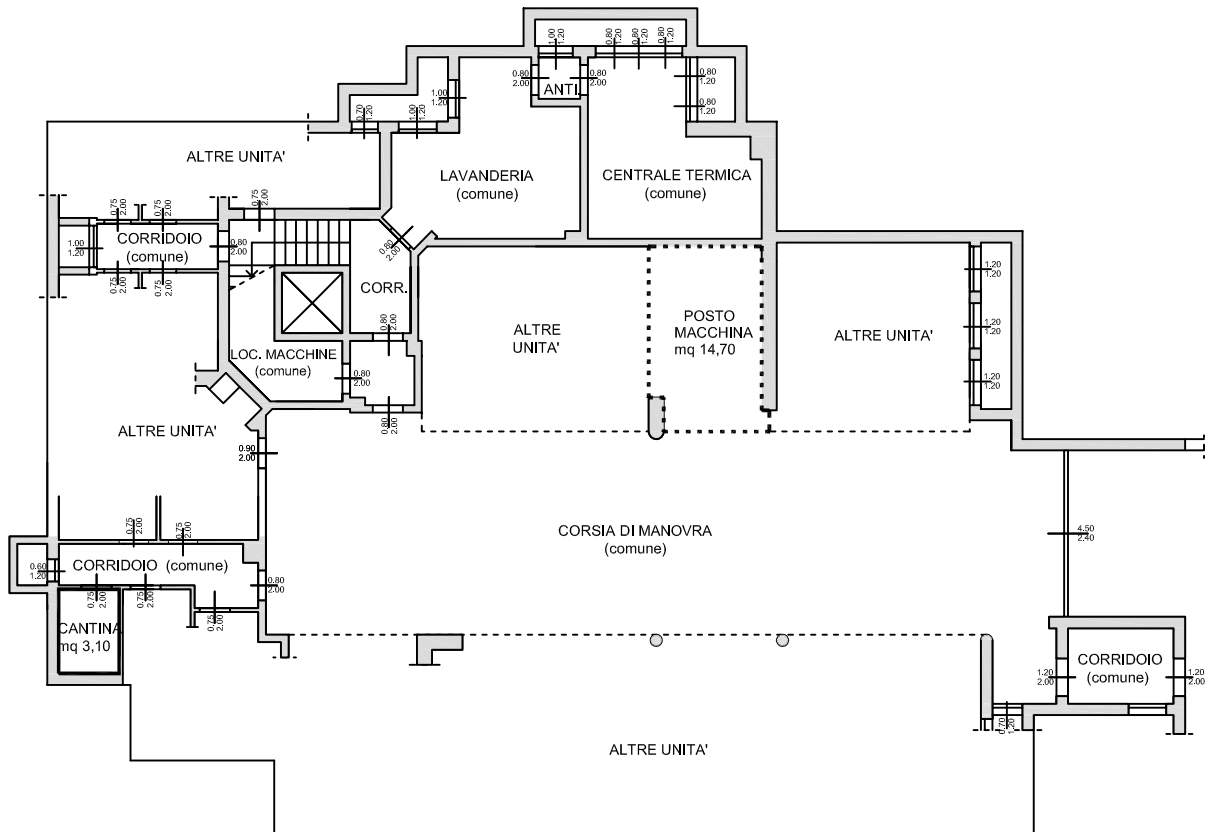
PIANO SEMINTERRATO

h = 2,70 m

SUB 13

P.S. Sup. posto macchina mq 14,70

IL TECNICO, TRE VILLE 18/05/15





100