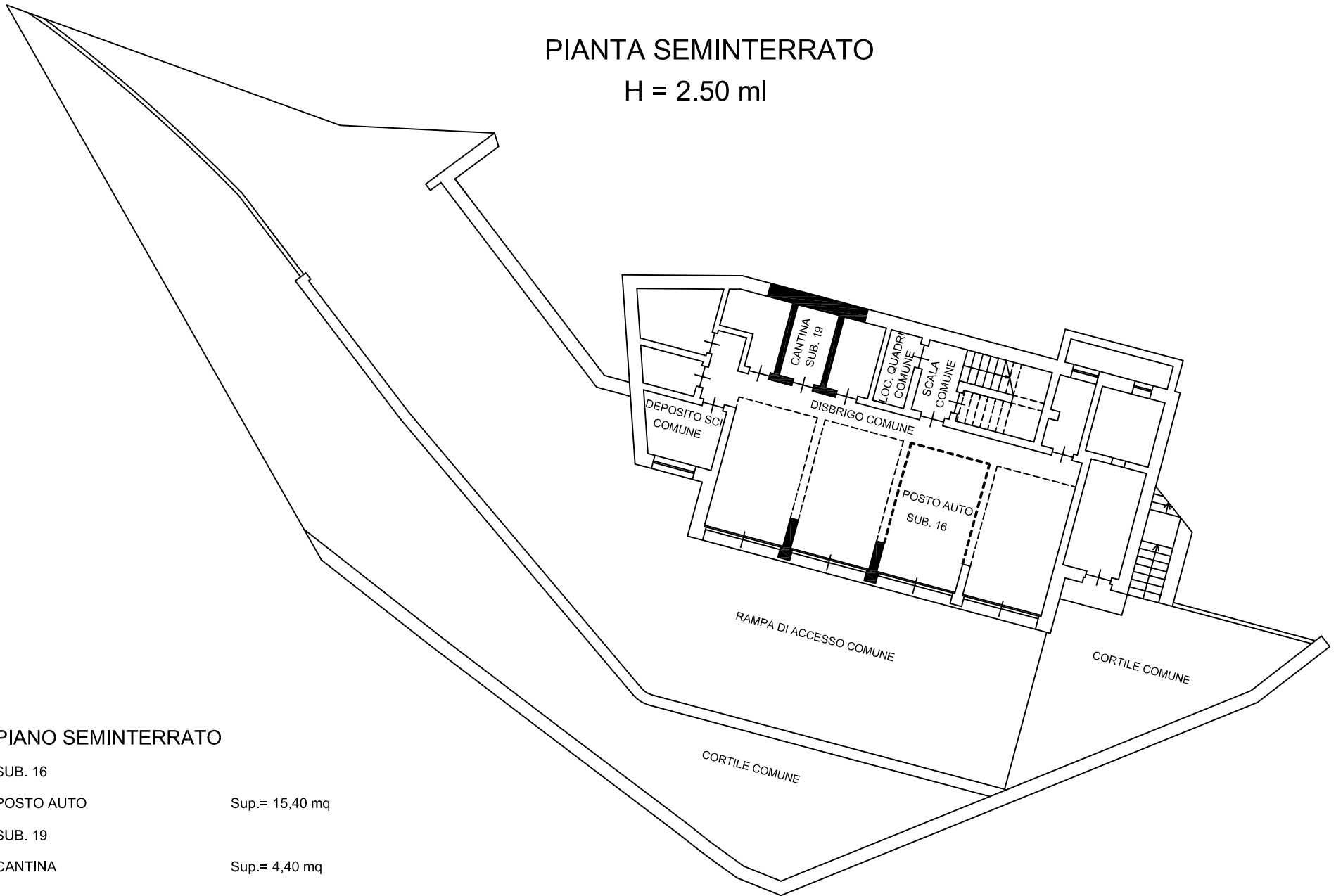


CASA FORESTALE PALU' DI MADONNA DI CAMPIGLIO - APPARTAMENTO 2
P.ED. 79 C.C. RAGOLI II
SUB. 16 - 19

PIANTA SEMINTERRATO
H = 2.50 ml



PIANO SEMINTERRATO

SUB. 16	
POSTO AUTO	Sup.= 15,40 mq
SUB. 19	
CANTINA	Sup.= 4,40 mq

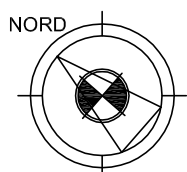
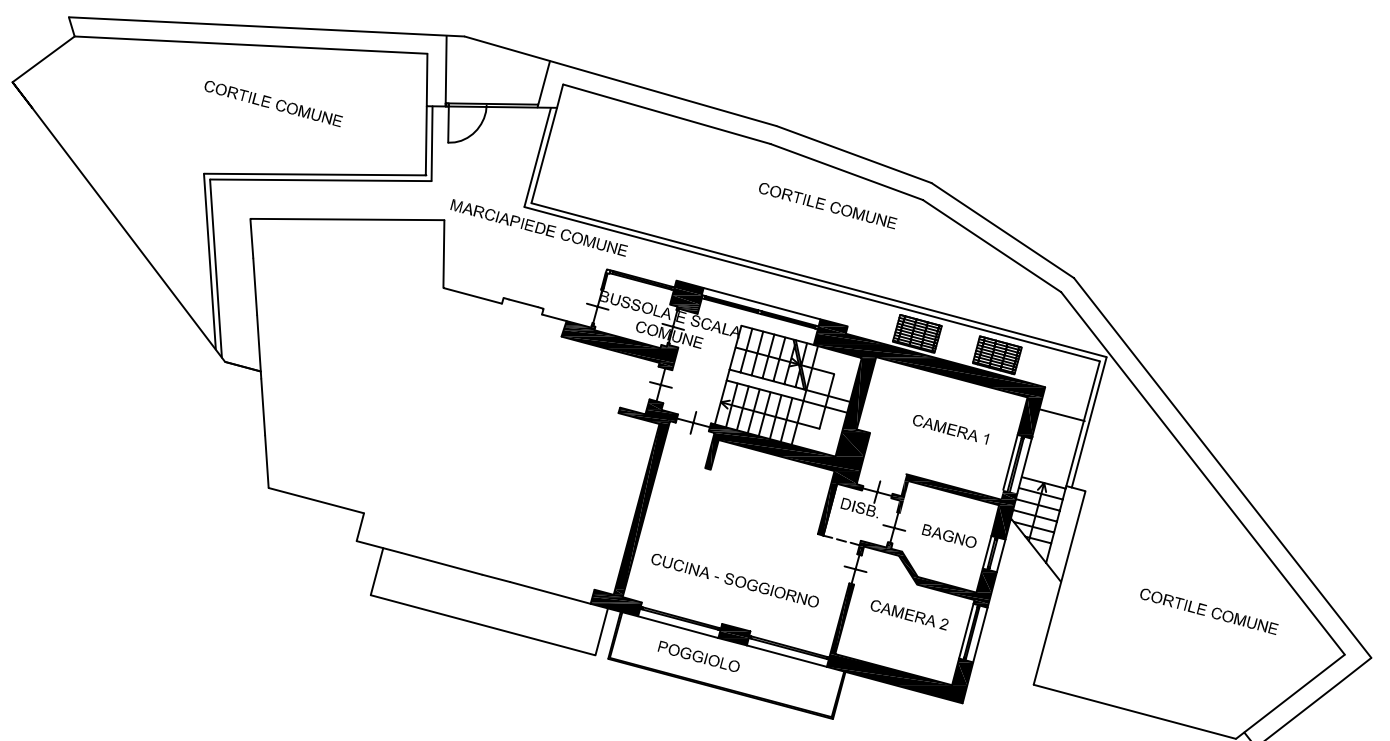
PIANO TERRA

SUB. 19	
INGRESSO	Sup.= 1,10 mq
SOGGIORNO/CUCINA	Sup.= 23,45 mq
BAGNO	Sup.= 5,60 mq
DISBRIGO	Sup.= 2,20 mq
CAMERA 1	Sup.= 11,70 mq
CAMERA 2	Sup.= 8,05 mq
POGGIOLO	Sup.= 7,90 mq
TOTALE APPARTAMENTO NETTI	Sup.= 60,00 mq

PIANO SEMINTERRATO

COMUNE AI SUB. 18 - 19 - 20 - 21	
DEPOSITO SCI	Sup.= 6,45 mq

PIANTA TERRA
H = 2.50 ml



SCALA 1:200







